

CITY OF MURRAY CONTROL MONUMENT CARD

DESIGNATION: PT #3

TYPE: CONCRETE MONUMENT W/ CITY DISK

DATE SET: JUNE 2002 QUAD: MURRAY, KY.

HORIZONTAL DATUM: NAD-83 VERTICAL DATUM: NAVD-88

STATE: KENTUCKY COUNTY: CALLOWAY ZONE: KY. S 1602

NORTHING: 1743596.21 FT

EASTING: 882432.23 FT

ELEVATION: 540.37 FT (GPS)

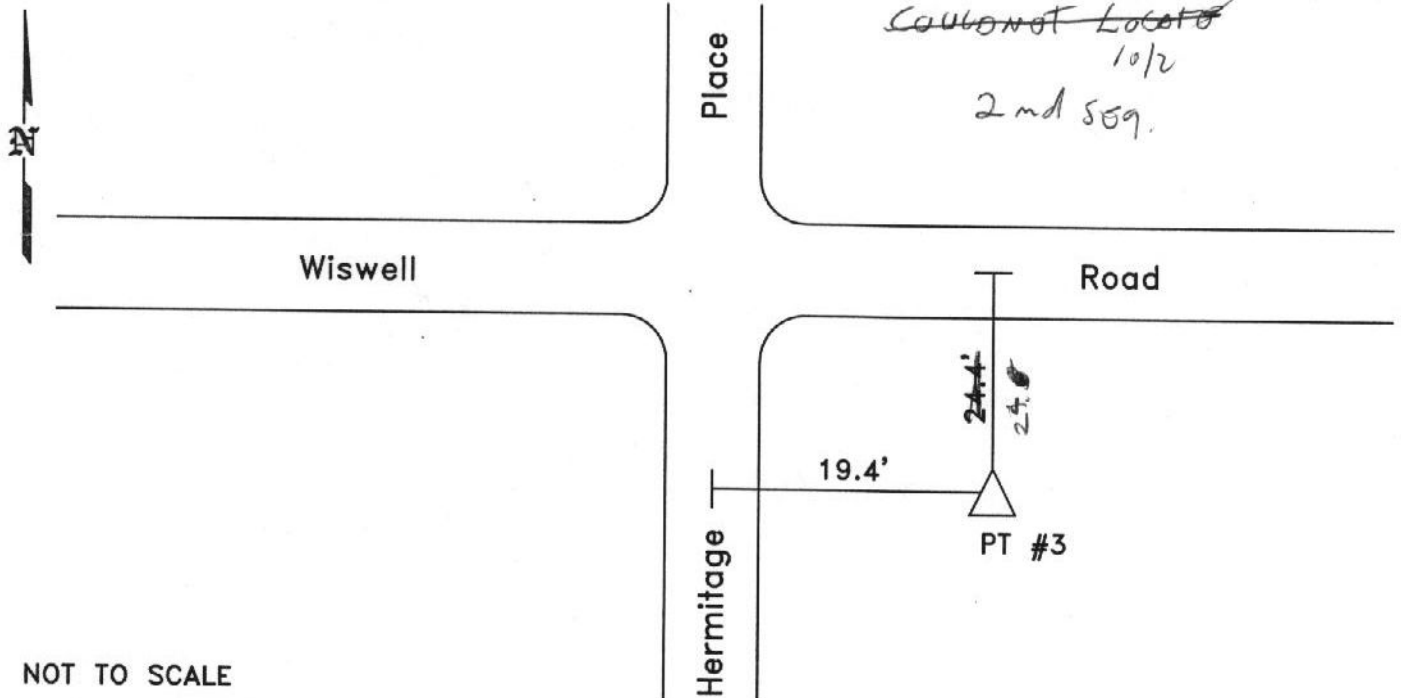
LATITUDE: N 36°35'17.79015" LONGITUDE: W 088°19'54.98663"

SCALE:

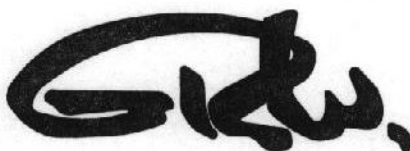
CONVERGENCE:

PLANE AZI. TO AZI. MARK:

To Reach: Located 24.4' south of the centerline of
Wiswell Road and 19.4' east of the centerline of
Hermitage Place.



NOT TO SCALE



GRW Aerial Surveys, Inc.
801 Corporate Dr. Lexington Ky. 40503
(859)223-3999